



Project

Each thermowell is an important component of any temperature measurement point. It is used to separate the process from the surrounding area, thus protecting the environment and operating personnel and keeps aggressive media, high pressures and flow rates from the temperature sensor itself and thereby enables the thermometer to be exchanged during operation.

Based on the almost limitless application possibilities, there are a large number of variants, such as thermowell designs or materials. The type of process connection and the basic method of manufacture are important design differentiation criteria. A basic differentiation can be made between threaded and weld-in thermowells, and those with flange connections.

Furthermore, one can differentiate between fabricated and solid-machined thermowells. Fabricated thermowells are constructed from a tube, that is closed at the tip by a welded solid tip. Solid-machined thermowells are manufactured from barstock.

The SWTxx series of fabricated 1) threaded or weld-in thermowells are specifically adapted for use with the models 52 and 73 mechanical thermometers.

Due to the cost-effective design and fast adjustment and exchange of the thermometer, these are the thermowells of choice for use in machine building and heating technology.

Features and Applications

- Wide range of applications in vessel, tubing and apparatus construction, machine building and industrial heating
- For use with models 52 and 73 mechanical thermometers
- Cost-effective design
- Quick adjustability and replaceability of thermometers

Ordering information

- Model
- Material
- Process connection
- Insertion length
- Options

Specifications

Standard version

- Thermowell material process connection Copper alloy, St35 ⁽¹⁾ or stainless steel
- Process connection Models SWT52G, SWT71G: G B thread; Models SWT52S, SWT71S: welding stud
- Connection to thermometer Suitable for thermometers with smooth connection (without threads), collar Ø 18 mm; Fixing via M4 retaining screw
- Bore size Suitable for 8 mm insertion diameter (model 52 thermometer) or 13 mm (model 73 thermometer)

Insertion length Suitable for the various standard insertion lengths, I1, of models 52 and 73 thermometers

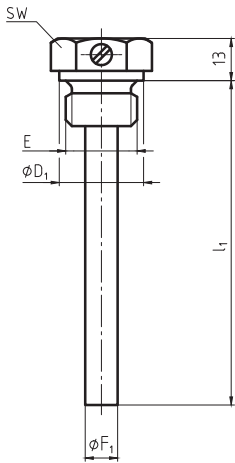
- Max. process temperature, process pressure 160 °C with copper alloy as thermowell material (6 bar stat.) 500 °C with St35, stainless steel as thermowell material (25 bar stat.)

- Depending on
 - Thermowell design
 - Dimensions
 - Material
- Process conditions
 - Flow rate
 - Density of medium

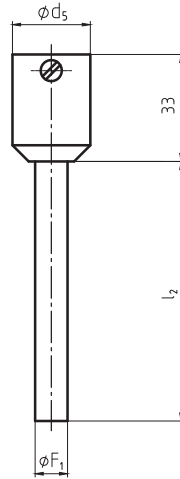
(1) Thermowell stem material: stainless steel

Dimensions in mm

Threaded process connection



Welding stud process connection



Legend:

- l_1 Insertion length (threaded connection)
- l_2 Insertion length (weld-in connection)
- $\varnothing d_5$ Welding stud diameter
- E Process connection
- $\varnothing D_1$ Diameter of the sealing collar
- SW Flats
- $\varnothing F_1$ Thermowell external diameter

Threaded process connection

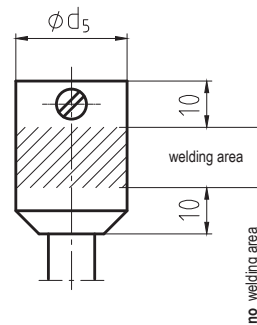
(Copper alloy, St35 or stainless steel)

Thermometer	Dimensions in mm				
	l_1	E	SW	$\varnothing F_1$	$\varnothing D_1$
Model 52	45	G ½ B	27	10	26
	63	G ½ B	27	10	26
	100	G ½ B	27	10	26
	160	G ½ B	27	10	26
	200	G ½ B	27	10	26
Model 73	63	G ½ B	27	16	26
	100	G ½ B	27	16	26
	160	G ½ B	27	16	26
	200	G ½ B	27	16	26

Welding stud process connection

(St35 or stainless steel)

Thermometer	Dimensions in mm		
	l_2	$\varnothing d_5$	$\varnothing F_1$
Model 52	43	24	10
	80	24	10
	140	24	10
	180	24	10
Model 73	43	24	16
	80	24	16
	140	24	16
	180	24	16



Suitable for insertion lengths of models 52 and 73 thermometers

Process connection	Insertion length, l_1 , of the thermometer
Thread	l_1 = insertion length, l_1 , of the thermowell
Welding stud	l_1 = insertion length, l_2 , of the thermowell + 20 mm [0.8 in]

www.bermo.com.br

Matriz

Blumenau-SC
47 2123-4444
bermo@bermo.com.br

Filiais

Chapecó-SC
49 3322-2177
bermocco@bermo.com.br

Curitiba-PR
41 2111-4344
bermocwb@bermo.com.br

Joinville-SC
47 3435-3635
bermojvl@bermo.com.br

Porto Alegre-RS
51 3464-5159
bermopoa@bermo.com.br

Salvador-BA
71 3512-4488
bermossa@bermo.com.br

São Paulo-SP
11 2505-1500
bermosp@bermo.com.br